



Compro WebVUer V2.0



WebVUer

Compro WebVUer is a:

- 1.a light weight program that runs in web browsers**
- 2.does not need a host computer to be running all the time**
- 3.can be accessed anywhere in the world, without needing a CD**
- 4.targeted towards the average users or people who are always on the go**
- 5.no messy software installation or configuration, plug and play**
- 6.an intuitive interface which offers a minimalist style UI to avoid user confusion**



WebVUer V2.0 Key Benefits

- 1.Support for none ActiveX browsers, e.g. Mozilla Firefox, Google Chrome, etc**
- 2.Multi camera viewing for up to 16 channels without software installation**
- 3.Recording of live video**
- 4.iDoctor utility included for an easier troubleshooting**
- 5.Added smart audio and camera tempering detection**
- 6.Support of customized logo and text overlay on the video streaming**
- 7.Cell phone PTZ control, including iPhone, BlackBerry, HTC Hero.**
- 8.Brand new user interface layout for an easier operation**

Release time = April 2010

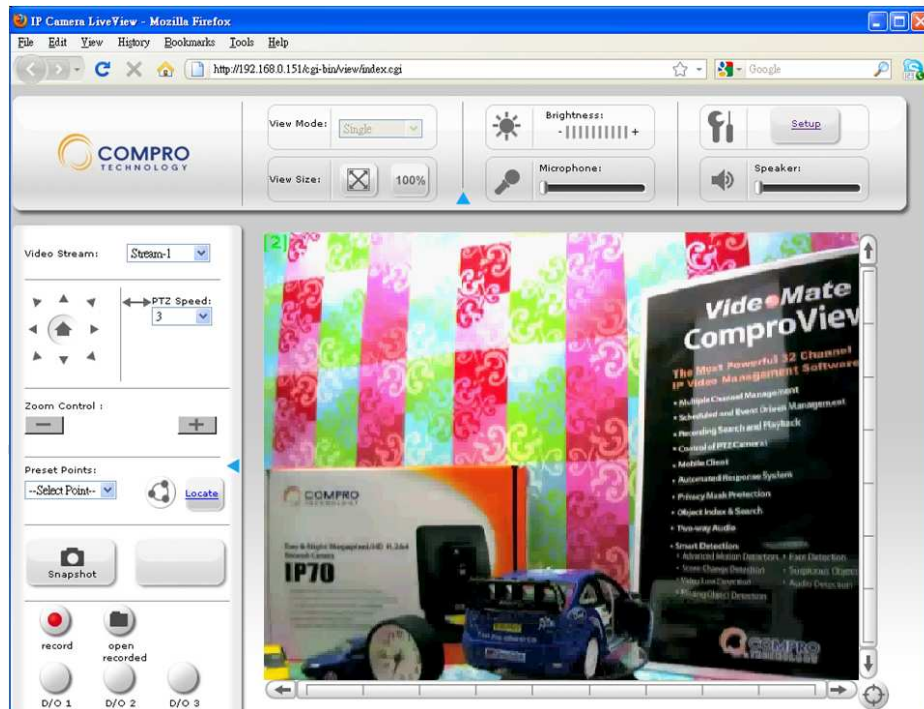


Support for none ActiveX browsers

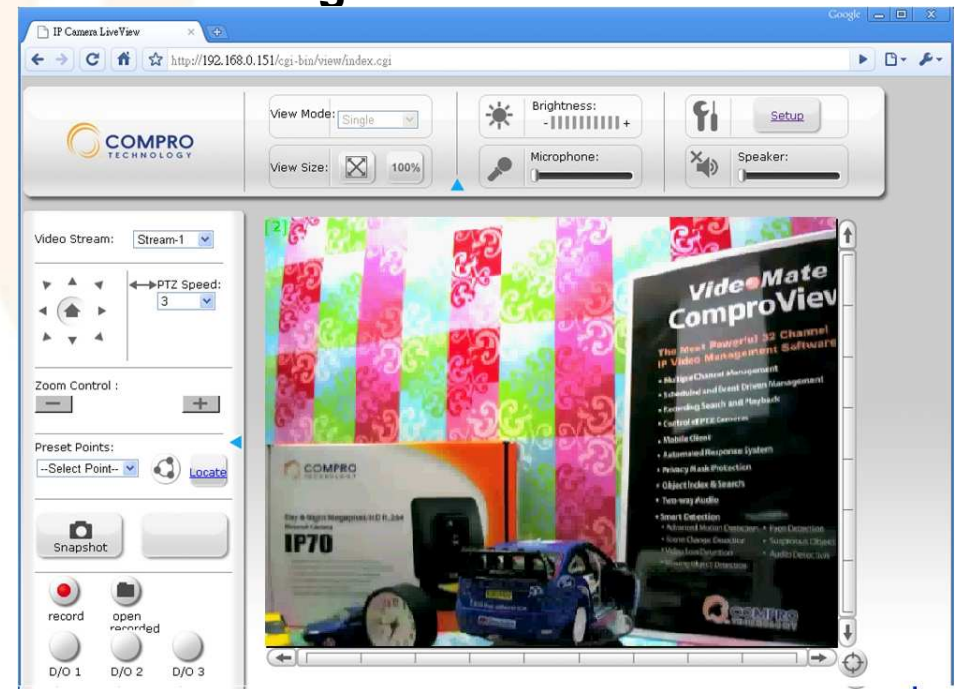
Three most popular browsers (March 2010):

1. Microsoft Internet Explorer, 54.5%
2. Mozilla Firefox, 30.96%
3. Google Chrome, 5.61%

Mozilla Firefox



Google Chrome



*VLC is required for viewing



Exclusive 16x Camera viewing

The screenshot displays the Compro Video Mate software interface. At the top, there is a control bar with the Compro Technology logo, a 'View Mode' dropdown set to 'Multiple', a 'View Size' control set to 100%, a 'Brightness' slider, a 'Microphone' slider, and a 'Speaker' slider. Below this, the main interface is divided into a left sidebar and a central video area. The sidebar contains a 'Video Stream' dropdown set to 'Stream-1', a PTZ Speed control set to 3, zoom controls, a 'Preset Points' dropdown set to '--Select Point--', and buttons for 'Snapshot' and 'Communicate'. At the bottom of the sidebar are 'record' and 'open recorded' buttons, and three 'D/O' buttons labeled 'D/O 1', 'D/O 2', and 'D/O 3'. The central video area shows a 2x2 grid of camera feeds. The top-left feed (labeled [1]) shows an office desk with a printer and a computer monitor. The top-right feed (labeled [2]) shows a colorful display with a 'Video Mate ComproView' sign. The bottom-left feed (labeled [3]) shows a display with a 'COMPRO TECHNOLOGY Day & Night Megapixel/HD H.264 Network Camera IP70' sign and a yellow toy car. The bottom-right feed (labeled [4]) shows a close-up of a display. At the bottom of the video area is a navigation bar with a dropdown menu showing options: '1~4', '5~8', '9~12', '13~16', and '1~4' (selected).

4 channels viewing
Up to 16 cameras



Intelligent onboard detections



Motion, captured by the sharp lens



Audio, out of sight but not out of mind



Tempering, smart disturbance detection



Alarm will be triggered



Instant recording

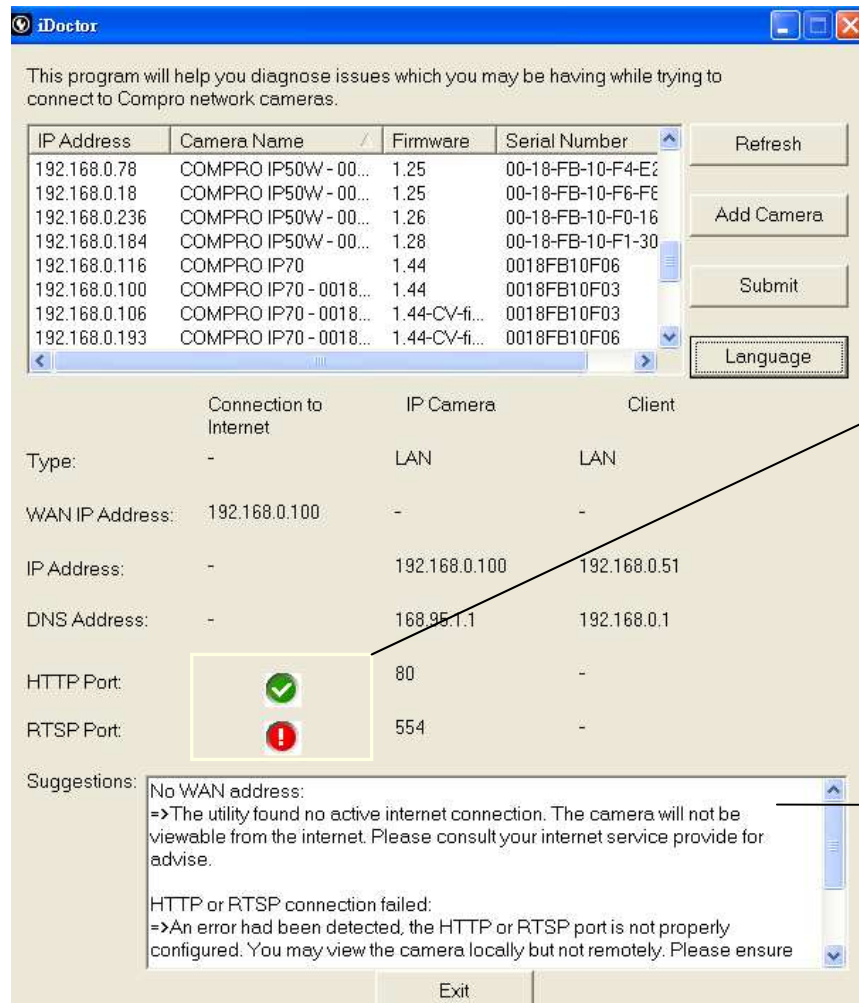


Instant recording on the front panel

The recorded file can be played back without proprietary software



iDoctor, intelligent troubleshoot helper



This program will help you diagnose issues which you may be having while trying to connect to Compro network cameras.

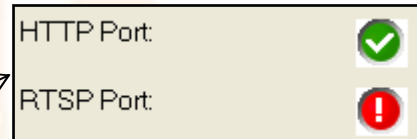
IP Address	Camera Name	Firmware	Serial Number
192.168.0.78	COMPRO IP50W-00...	1.25	00-18-FB-10-F4-E2
192.168.0.18	COMPRO IP50W-00...	1.25	00-18-FB-10-F6-FE
192.168.0.236	COMPRO IP50W-00...	1.26	00-18-FB-10-F0-16
192.168.0.184	COMPRO IP50W-00...	1.28	00-18-FB-10-F1-30
192.168.0.116	COMPRO IP70	1.44	0018FB10F06
192.168.0.100	COMPRO IP70-0018...	1.44	0018FB10F03
192.168.0.106	COMPRO IP70-0018...	1.44-CV-fi...	0018FB10F03
192.168.0.193	COMPRO IP70-0018...	1.44-CV-fi...	0018FB10F06

	Connection to Internet	IP Camera	Client
Type:	-	LAN	LAN
WAN IP Address:	192.168.0.100	-	-
IP Address:	-	192.168.0.100	192.168.0.51
DNS Address:	-	168.95.1.1	192.168.0.1
HTTP Port:	✓	80	-
RTSP Port:	!	554	-

Suggestions:

- No WAN address:
=>The utility found no active internet connection. The camera will not be viewable from the internet. Please consult your internet service provide for advise.
- HTTP or RTSP connection failed:
=>An error had been detected, the HTTP or RTSP port is not properly configured. You may view the camera locally but not remotely. Please ensure

Intuitive User Interface



HTTP Port: ✓
RTSP Port: !

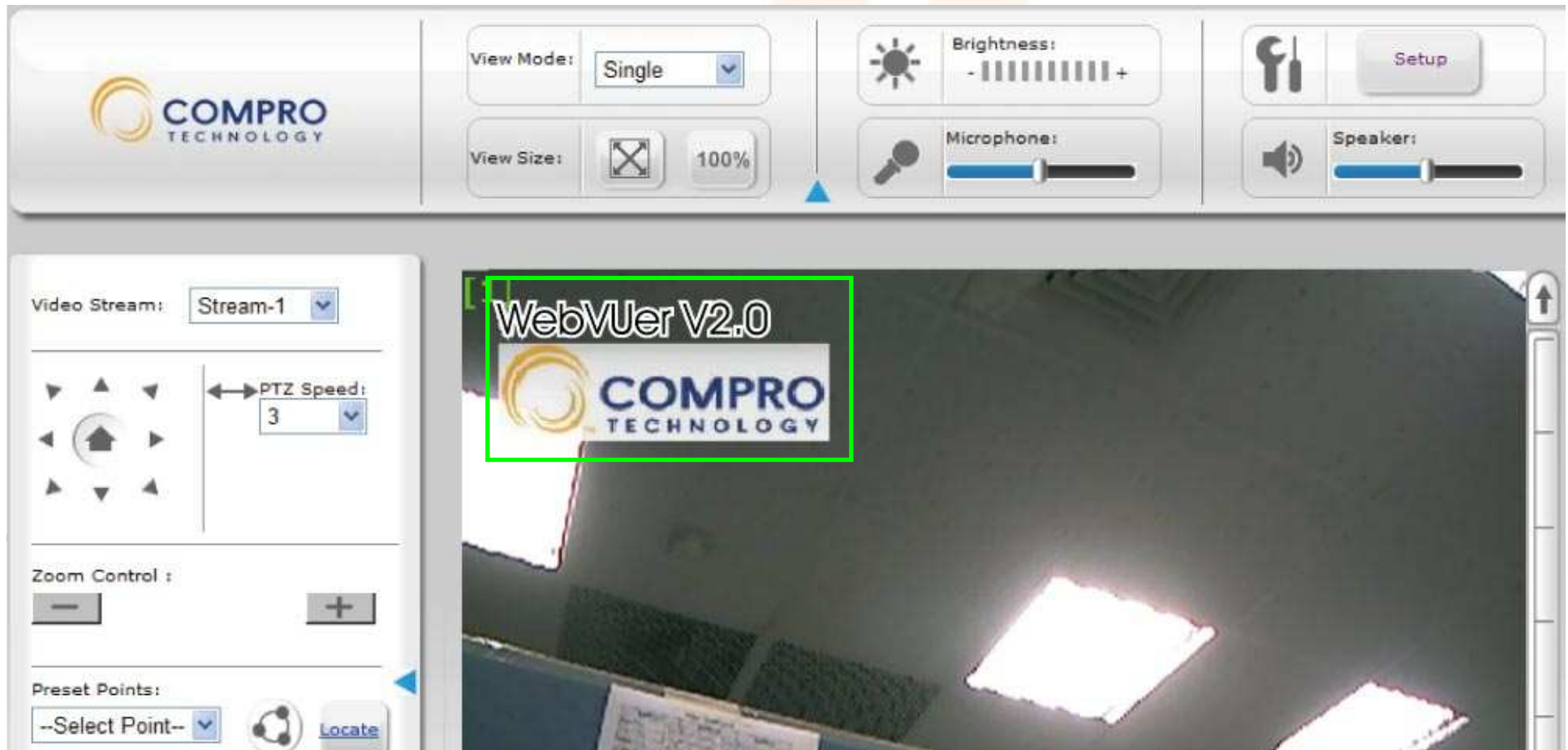
Automated knowledge base

HTTP or RTSP connection failed:
=>An error had been detected, the HTTP or RTSP port is not properly configured. You may view the camera locally but not remotely. Please ensure that both the HTTP and RTSP ports had been forwarded correctly in your router/firewall. You may wish to consult your manual or PortForward.com for more information.



Embedded customizable logo & text

A great advertisement tool and markedly raised the brand awareness

A screenshot of a web-based video control interface. The interface is divided into several sections. At the top, there is a header bar with the Compro Technology logo on the left and control buttons for View Mode (set to 'Single'), View Size (set to '100%'), Brightness (with a slider), Microphone (with a slider), and a 'Setup' button. Below the header, the main area is split into a control panel on the left and a video stream on the right. The control panel includes a 'Video Stream' dropdown set to 'Stream-1', a PTZ Speed control (set to '3'), Zoom Control (+/- buttons), and Preset Points (a dropdown set to '--Select Point--' and a 'Locate' button). The video stream shows a dark room with a bright light source. A green rectangular box is overlaid on the video stream, containing the text 'WebVuer V2.0' and the Compro Technology logo.



Cell phone PTZ control

No messy software installation

Works with most web browsers

No 3GPP compatibility issue

No additional firewall configuration required

Compatible with HTC / iPhone / BlackBerry, etc

